

14830 South County Line Road

New Fairview, TX 76247

4 

2.5 

2,797 

3 



The layout is designed to seamlessly blend indoor and outdoor living with an open-concept, wood flooring kitchen, dining, and family room that easily transitions to the covered patio.

For any passionate cook, the designer kitchen is a true delight. Stainless-steel appliances, beautiful countertops, white cabinets, a center island with room for seating, and a sizeable walk-in pantry make family time and entertaining a breeze. The family room is the perfect area for gathering loved ones while the stunning stone-to-ceiling fireplace heats those winter nights.

At the end of the day, relax in the spacious master bedroom that boasts views of the backyard, a boxed ceiling, and a large walk-in closet. The adjoined master bath has a luxury spa that includes a free-standing tub and an oversized walk-in shower.

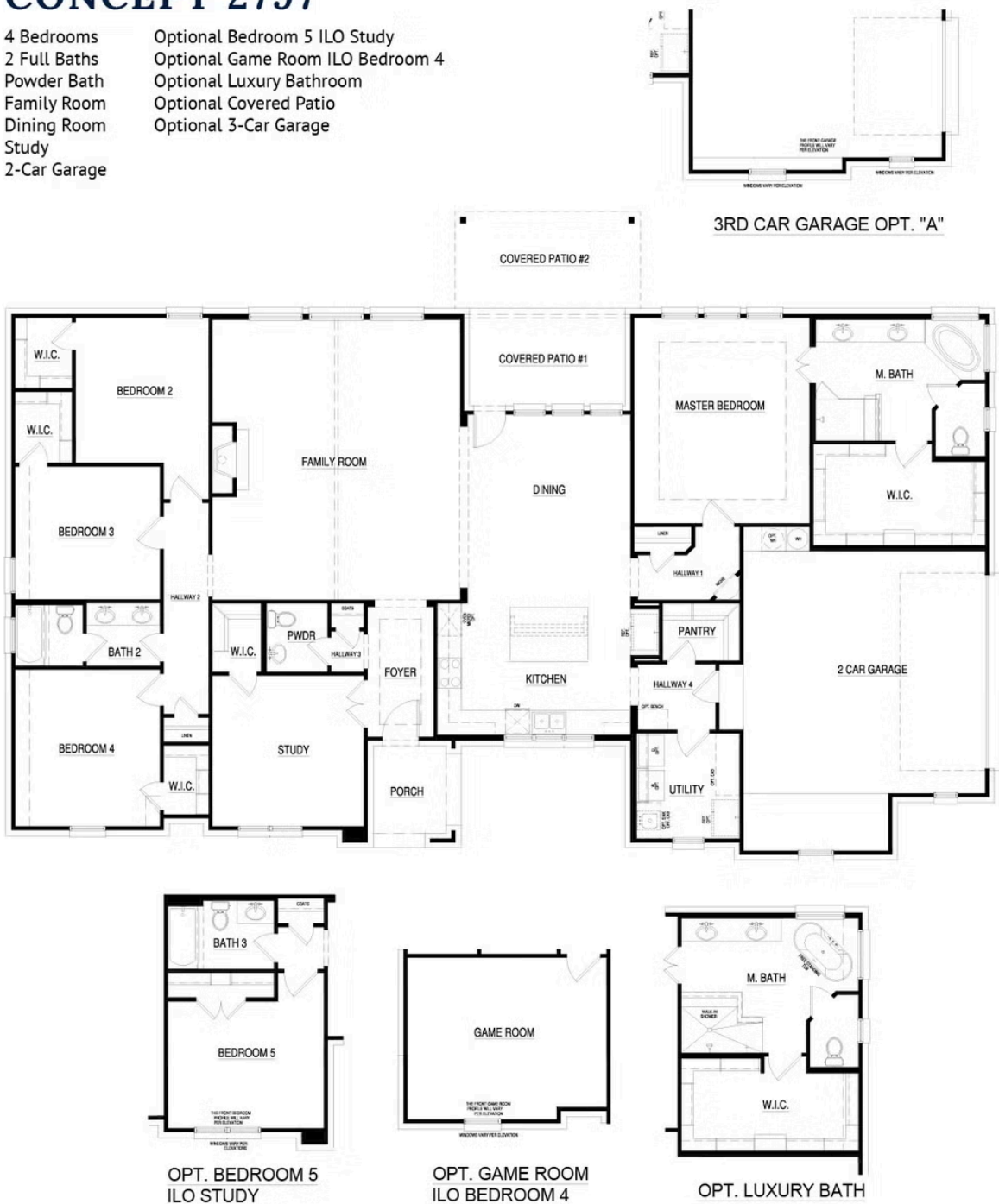
Three additional bedrooms offer a walk-in closet and easy access to the second full bath with dual vanity and a linen closet. The utility room offers cabinets and a sink with plenty of space for a full-sized washer and dryer and has access to the three-car garage.



CONCEPT 2797

4 Bedrooms
2 Full Baths
Powder Bath
Family Room
Dining Room
Study
2-Car Garage

Optional Bedroom 5 ILO Study
Optional Game Room ILO Bedroom 4
Optional Luxury Bathroom
Optional Covered Patio
Optional 3-Car Garage



In a continuing effort to improve our products and communities, Antares Homes may (in its sole and exclusive discretion and without creating any obligation or notice) abandon, change, or otherwise modify plans, pricing, included features, home site availability, terms, etc. All images, renderings, dimensions, depictions or descriptions of home designs and layouts being offered are for representational and informational purposes only and may vary from the homes being built or completed improvements. All dimensions and designs are subject to field variations and modifications. © 2020 Antares Homes.

