

15090 South County Line Road

New Fairview, TX 76247

4 

2.5 

2,609 

2 



This stunning four-bedroom home with a warm stone-to-ceiling fireplace is perfect for modern family living. When you open the front door, a study with french doors welcomes you, which is a great place to work from home. The family room, kitchen, and nook all have beautiful wood floors, that will make family and friends fall in love with this home.

The kitchen is large and well-equipped with a central island, and stainless steel appliances. The kitchen leads to the breakfast nook which features bay windows. The breakfast nook also has direct access to a large covered patio, the powder room, the utility room with a sink and cabinets, and the two-car garage.

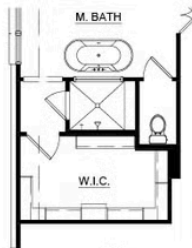
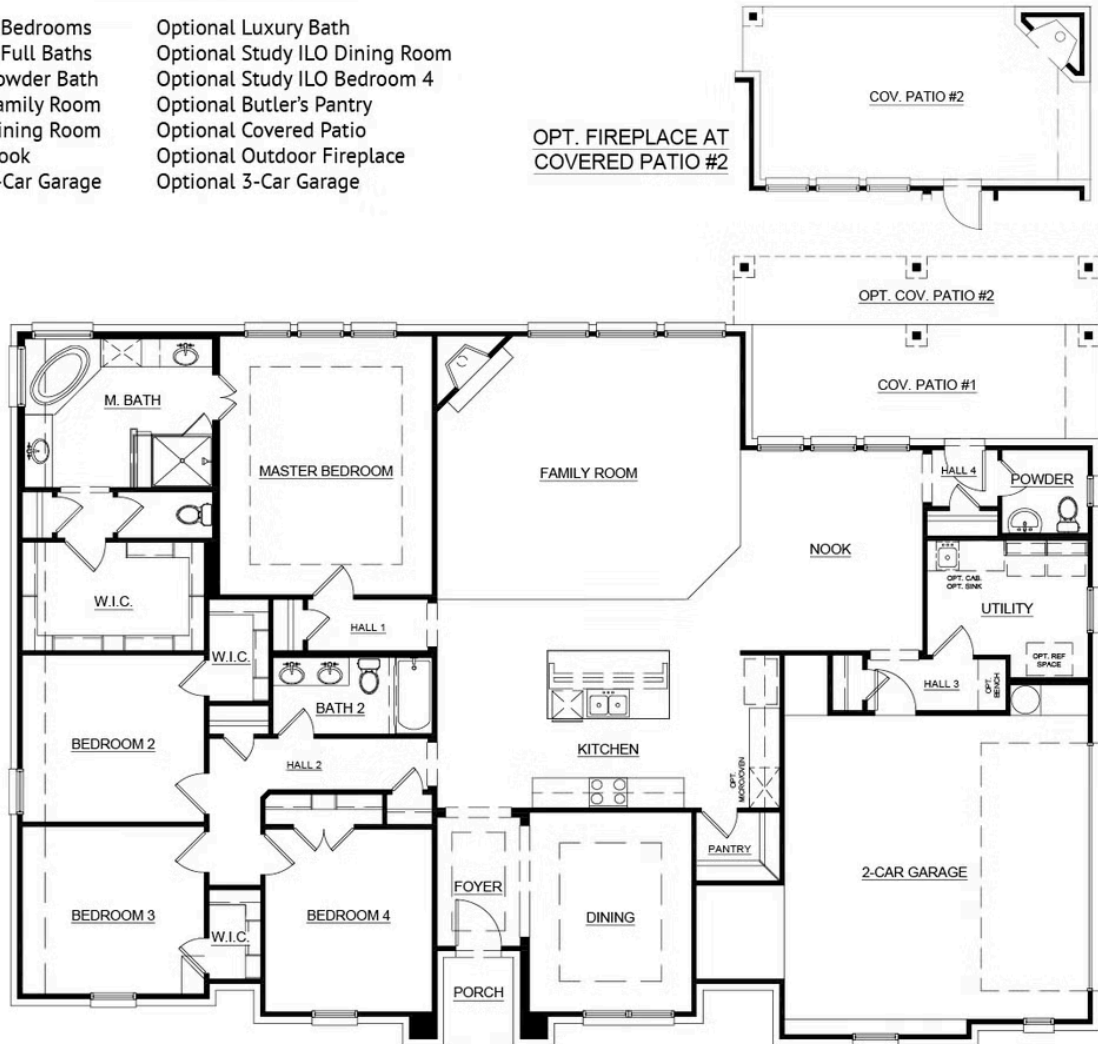
The master suite is set at the rear of the home in its own wing complete with an ensuite bath and a huge walk-in closet. Three bedrooms have easy access to a full bath and have their own walk-in closets.



CONCEPT 2586

4 Bedrooms
2 Full Baths
Powder Bath
Family Room
Dining Room
Nook
2-Car Garage
Optional Luxury Bath
Optional Study ILO Dining Room
Optional Study ILO Bedroom 4
Optional Butler's Pantry
Optional Covered Patio
Optional Outdoor Fireplace
Optional 3-Car Garage

OPT. FIREPLACE AT
COVERED PATIO #2



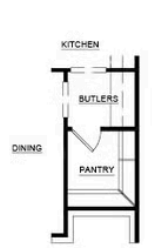
OPT. LUXURY MASTER
BATHROOM



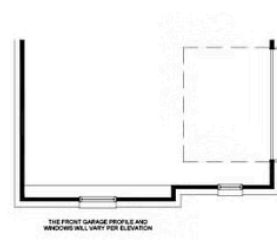
OPT. STUDY
ILO DINING



OPT. STUDY ILO
BEDROOM #4



OPT. BUTLERS



3RD CAR GARAGE
OPT. "A"

In a continuing effort to improve our products and communities, Antares Homes may (in its sole and exclusive discretion and without creating any obligation or notice) abandon, change, or otherwise modify plans, pricing, included features, home site availability, terms, etc. All images, renderings, dimensions, depictions or descriptions of home designs and layouts being offered are for representational and informational purposes only and may vary from the homes being built or completed improvements. All dimensions and designs are subject to field variations and modifications. © 2021 Antares Homes.

