



CONCEPT 2267

Villages of Walnut Grove

3 

2 

2,267 Sq Ft 

2 



This beautiful open-concept floor plan has eight different front elevations, and four with unique optional stone, and intricate brick details. Step inside from the covered front porch and the vast foyer welcomes you to the formal dining room with vaulted ceilings, a perfect space to host dinner parties or enjoy everyday family mealtime. For those needing a space to work from home or a quiet space to enjoy hobbies, a private study with French doors and a storage closet is located just across the foyer.

Open to the kitchen and breakfast nook is the spacious family room which is filled with natural light, providing friends and family a bright space to gather. Choose to add warmth to this space by including an optional fireplace.

The expansive master suite is set back from the living spaces, providing parents optimal privacy. The adjoined master bathroom is complete with dual vanities, a separate walk-in shower with a seat, a large garden tub, and a huge walk-in closet.

Two additional bedrooms are located at the front of the home. Both bedrooms have easy access to a full bathroom with a dual sink vanity, making getting ready in the mornings a breeze. If additional space for kids or guests is needed, choose to add a fourth bedroom in lieu of the study. For added privacy and convenience, the full-sized utility room provides direct access to the two-car garage.





8 Elevations Available



2267 A



2267 A with Stone



2267 B



2267 B with Stone



2267 C



2267 C with Stone

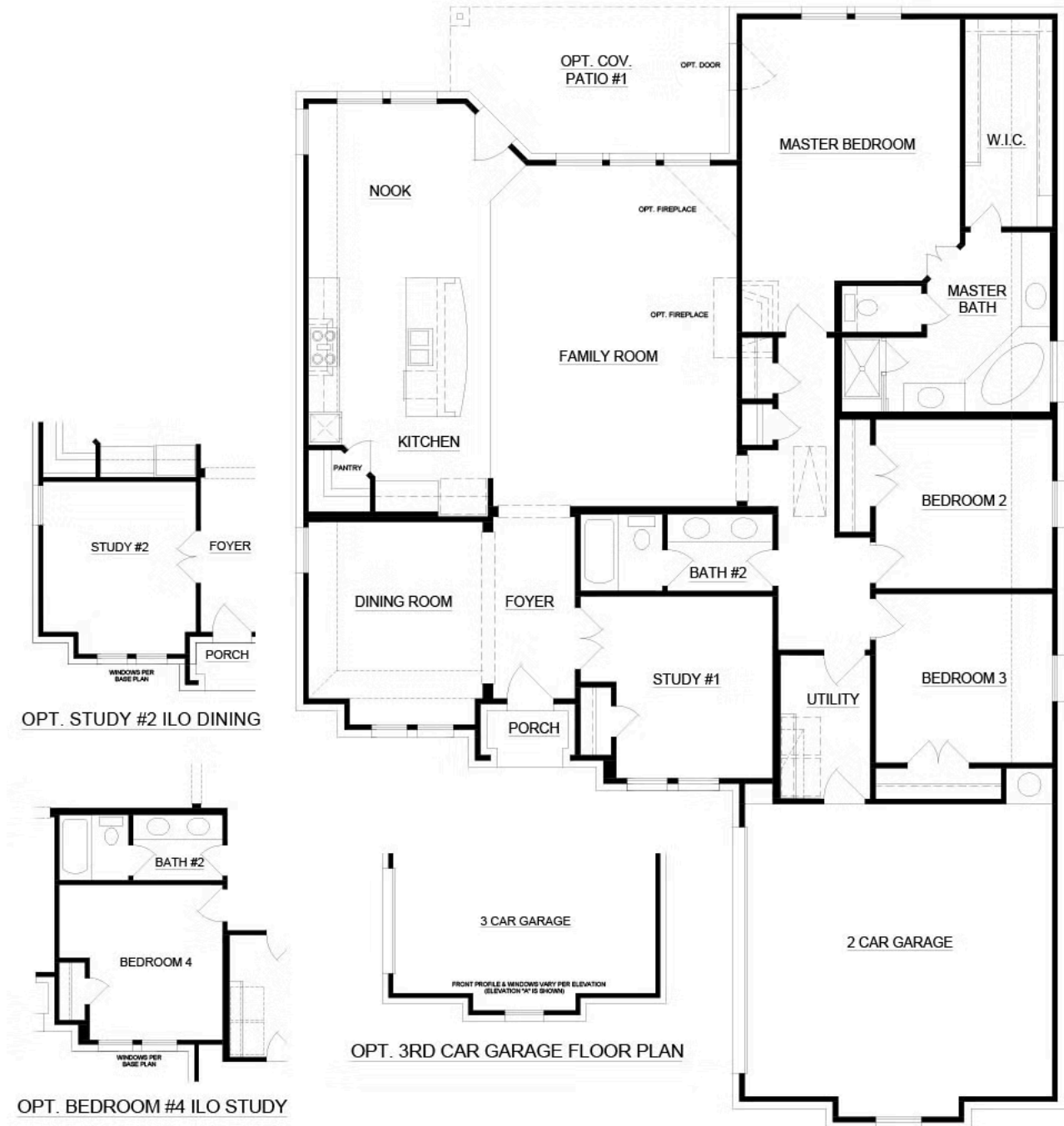


2267 D



2267 D with Stone





OPT. STUDY #2 ILO DINING

OPT. BEDROOM #4 ILO STUDY

OPT. 3RD CAR GARAGE FLOOR PLAN

