

# 337 Pasture Drive

Midlothian, TX 76065

4 

2.0 

2,146 

2 



This grand and timeless concept is perfect for growing families looking for a smaller space without having to sacrifice privacy or openness in the living areas.

Step in from the covered front porch and enjoy a foyer with boxed ceilings, welcoming you inside. Set just off the foyer is the study with double doors, a space to work from home, or simply enjoy doing hobbies.

The open-concept kitchen, which is centered in the heart of the home, features a large central island, beautiful wood cabinets, granite countertops, stainless steel appliances, ample counter and storage space, and a corner walk-in pantry. The kitchen opens to a breakfast nook, complete with a sunny window seat, perfect for additional seating.

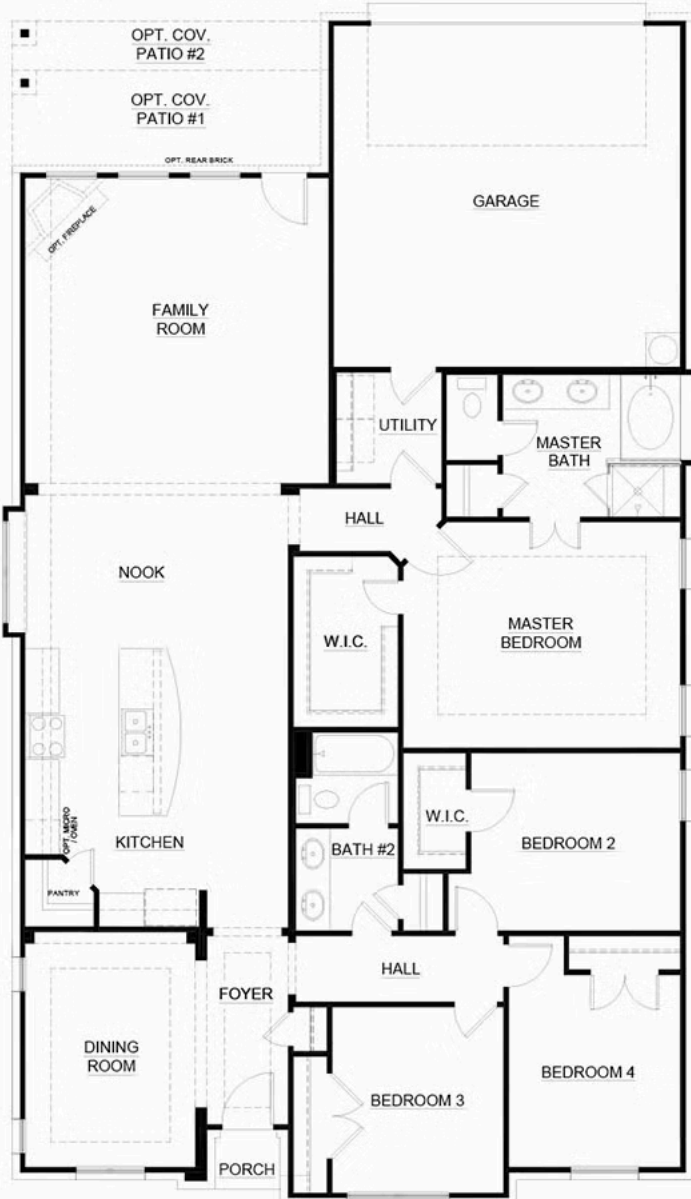
Enjoy a spacious family room flooded by natural light, welcoming friends and family to gather. The family room has a lovely fireplace and direct access to the rear-covered patio.

Designed for rest and relaxation, the master suite is tucked away from the family room. Enjoy a spacious room with boxed ceilings and a large walk-in closet. Accessible by double doors is the adjoining master bathroom featuring a dual sink vanity, a large garden tub with a ledge, a separate walk-in shower with a seat, and a linen closet.

Making them perfect for kids or guests, three additional bedrooms are located toward the front of the home. All have easy access to a full bathroom with a dual sink vanity as well as a linen closet.

For convenience, the full-sized utility room is set back from the master bedroom and provides direct access to the rear two-car garage.

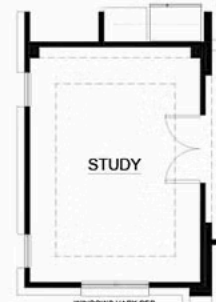




OPT. MASTER RETREAT  
ILO BEDROOM 2



OPT. KID'S RETREAT  
ILO BEDROOM 2



WINDOWS VARY PER  
ELEVATION. OPT. IS SHOWN  
WITH "X" ELEVATION

OPT. STUDY  
ILO DINING

