

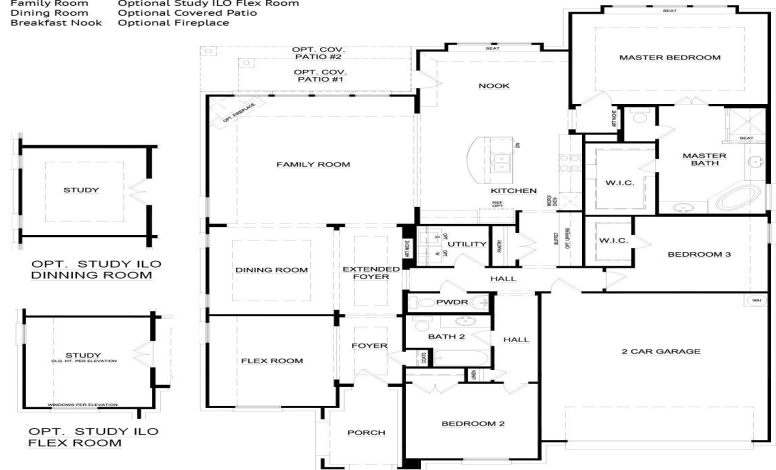
1233 Palo Duro Court

Burleson, TX 76028

3 
2.5 
2,434 
2 

CONCEPT 2434

3 Bedrooms
2 Full Baths
Powder Bath
Family Room
Dining Room
Breakfast Nook
Flex Room
2 Car Garage
Optional Study I/O Dining Room
Optional Study I/O Flex Room
Optional Covered Patio
Optional Fireplace



In a continuing effort to improve our products and communities, Antares Homes may (in its sole and exclusive discretion and without creating any obligation or notice) abandon, change, or otherwise modify plans, pricing, included features, home site availability, terms, etc. All images, renderings, dimensions, depictions or descriptions of home designs and layouts being offered are for representational and informational purposes only and may vary from the homes being built or completed improvements. All dimensions and designs are subject to field variations and modifications. © 2020 Antares Homes.



This well-designed 3-bedroom home offers generous entertaining spaces while providing quiet retreats for ultimate relaxation. Through the foyer, featuring boxed ceilings, enter into the study with French doors, giving you the space to do work or hobbies without interruption. Following the extended foyer is the dining with boxed ceilings welcoming family and friends into the space. Sure to be the hub of the home is the beautiful open concept wood-like tile flooring kitchen, breakfast nook, and family room. In the family room, enjoy a corner gas tile fireplace, and a wall of windows, flooding the room with natural light and showcasing this home's features. Open to the family room is the open-concept kitchen. With ample storage and counter space, stainless steel appliances, white cabinets, a double door pantry, granite countertops, and a central island preparing meals and keeping guests connected is a breeze. The kitchen opens to a sunny breakfast nook that will accommodate a formal dining table seating 8-10 people. Enjoy a morning cup of coffee outside on the large rear-covered patio. Tucked away from the family room for privacy is the master suite. Enjoy a spacious room with vaulted ceilings and an adjoining master bathroom featuring a dual sink vanity, large garden tub, separate walk-in shower with a seat, linen closet, and large walk-in closet. Two additional bedrooms are located toward the front of the home, making them perfect for kids or guests. Both bedrooms have easy access to a full bathroom and the powder room. A full-sized utility room and direct access to the two-car garage are located toward the front of the home.



CONCEPT 2434

3 Bedrooms Flex Room
2 Full Baths 2 Car Garage
Powder Bath Optional Study I/O Dining Room
Family Room Optional Study I/O Flex Room
Dining Room Optional Covered Patio
Breakfast Nook Optional Fireplace



In a continuing effort to improve our products and communities, Antares Homes may (in its sole and exclusive discretion and without creating any obligation or notice) abandon, change, or otherwise modify plans, pricing, included features, home site availability, terms, etc. All images, renderings, dimensions, depictions or descriptions of home designs and layouts being offered are for representational and informational purposes only and may vary from the homes being built or completed improvements. All dimensions and designs are subject to field variations and modifications. © 2020 Antares Homes.



